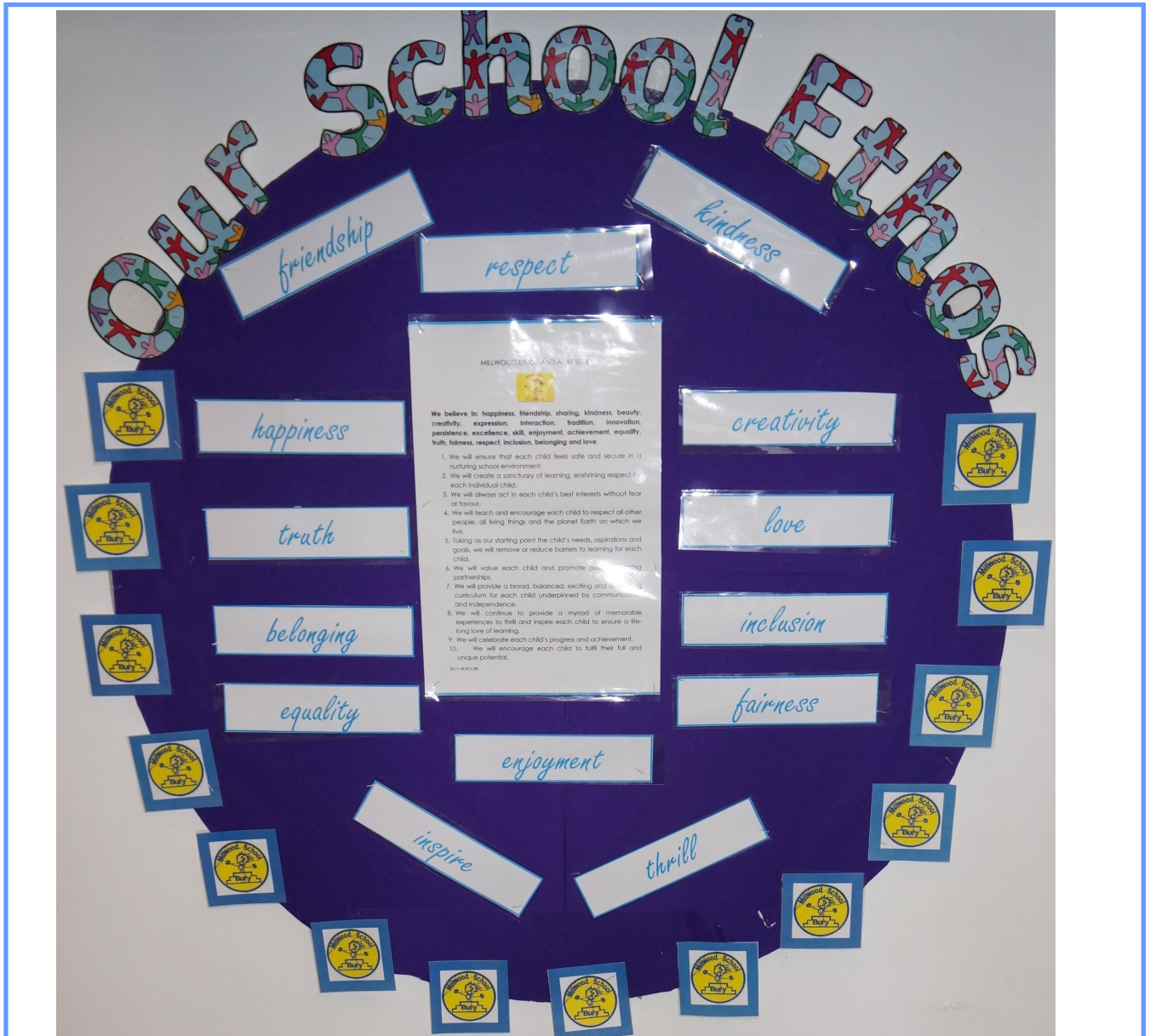


MILLWOOD NEWS

ISSUE No 378

NEWSLETTER DATE : FRIDAY 25TH JANUARY 2019



STARS OF THE WEEK

EYFS/KS1

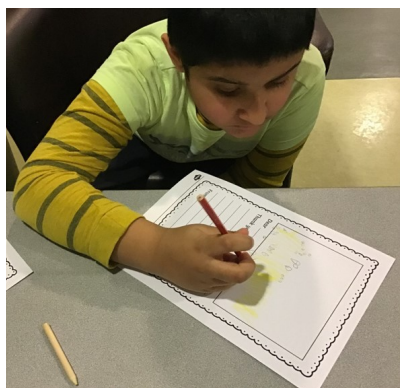
Noah P— he was a super star during the "Aladdin" sensory story. He independently pressed a switch to say hello, spontaneously imitated the "p" sound of "parrot" when it was presented to him and reached out to make a choice.

KS1/KS2

Brent W for fantastic progress with his personal and self- help skills.

SCHOOL COUNCIL NEWSLETTER

This week the school councillors were very busy. We started writing our thank you letters to the businesses who donated prizes for our school fair and also to the mayor for inviting us to visit her parlour. The children also made nominations for their school council certificates.



FIDGET FINGERS

This week we had a fantastic time at fidget fingers. The children are so creative and always come with clear ideas of what they want to build. This week the children created a range of models including a cat, a robot and a guitar not to mention the wide range of skills that they are developing. We look forward to seeing more creations next week.



Dear School,

The SEN Home to School transport service have been reviewing the current service options in preparation for a new contract specification which will be starting 1st September 2019. As part of this we would like to ask users of the service and other stakeholders to complete this survey to ensure your views are captured in service development where possible. The survey will be open until Sunday 3rd February 2019.

<https://www.onecommunitybury.co.uk/sen-home-to-travel-school-assistance>

We will also be holding a drop-in session:

Coffee and cake drop in, Tuesday 29th January 7pm-8pm, Bury2gether Parents forum, Brandlesholme Community Centre, Brandlesholme Road, Bury BL8 1HS.

If you have any queries, or would like any further information please do not hesitate to contact the School and College Transport Team on 0161 253 6968.

Kind Regards

Andrea Taylor-Blyth

Administrative Officer

School & College Transport Team

EXT 6968

WEBSITE

The school website is undergoing redevelopment and a re-launch in the next few weeks. If there is anything you are unable to find please contact the school and we will provide it.

Whitelow 1 have been exploring the work of the artist Andy Goldsworthy. We explored various natural materials including pebbles, shells, ice, petals and leaves.



We used these materials to create art work and sculptures. We investigated filling and emptying containers, bottles and moulds, with coloured water. We observed the changes when the moulds were frozen. We constructed a class ice sandcastle and shell sculpture. We examined shells. The children made imprints using their fingers in the sand to create patterns. They decorated their designs with shells.

Whitelow 2 There has been some really interesting weather this week that the children have really enjoyed - watching the snow falling, and sculpting carefully with sheets of ice. They have also been a fabulously engaged audience in the pantomime, cheering and singing, and even "Are you OK?" said Umamah, when poor little Peter Pan was knocked to the ground by Captain Hook.



Whitelow 3 This week Whitelow 3 have loved joining in with the panto Peter Pan, it was great fun. We have also been working very hard on our physical development and communication skills.



We are carrying on with our story "The Rainbow Fish" and we are getting very good at knowing what is coming next in the story.

Whitelow 4 have been playing games with peers this week! We all had lots of fun playing "Crocodile Dentist" and we did excellent waiting for our turn! In P.E., we practised rolling a ball to each other and following 'stop' and 'go' instructions.



Whitelow 5 This week is our last week focusing on the story of Elmer and that multi-coloured elephant has started to get a little bit cheeky. He jumped straight off the pages of the book and hid around school. The children in Whitelow 5 had to go and find him using their maps. Luckily they did a fantastic job and Elmer is back where he belongs in the book. Well done Whitelow 5 for following the clues and finding Elmer!



Redvales 1 have had another busy week. We enjoyed learning about old films, we liked the music and took selfies in black and white. We also enjoyed listening to and playing instruments to old music from the different decades. We all really enjoyed watching the Peter Pan pantomime, and we are doing really well responding to our sensory story, "The Loudest Roar".



Redvales 2 We have had a great week! We have been learning about natural and man-made objects in Science. We had great fun exploring sand, shells and pebbles in the first tray, water in the second and plastic toys and printing with paint in the third tray! The children enjoyed scooping sand with the shells and splashing their hands in the water the most. We also thoroughly enjoyed the pantomime "Peter Pan"!



Redvales 3 This week we have been enjoying reading and watching Toy Story as part of our English learning. We have been writing character descriptions and using similes and metaphors to describe settings. In Maths we have been looking at coins and the value of money, buying toys from the toy shop and giving the correct change.



In Geography we have enjoyed learning about The Water Cycle and experiencing water in different forms. We had lots of fun watching the pantomime, "Peter Pan" in school. We did lots of singing and dancing!

Redvales 4 We have had a lovely busy week! We are reading Dr Seuss's "One fish, two fish, red fish, blue fish" so a lot of our work this week has been linked to the book. We made a graph of "funny things" - "some have two feet, some have four, some have six and some have more!" We have named our own animals to rhyme with a verb like "the Yink likes to wink and drink pink ink" in the book. One of



ours was "my glap sits on my lap eating a bap while I clap!" Fantastic work by everyone. We have also tried Ancient Greek food, made Olympic flames and compared the human skeleton to a fish skeleton.



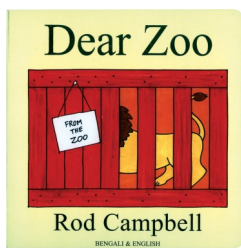
Redvales 5 have really enjoyed our new book "The Little Old Lady who swallowed a fly". We have been using our symbols to request which animal we would like the old lady to swallow next.



Redvales 6 have had another fabulous and fun-packed week! We continued our topic "It's Only Natural" and enjoyed mark making in wet sand using our fingers and a range of tools. In Maths we had great fun exploring the concept of object permanence. The children particularly enjoyed a game of "Peekaboo" and showed great anticipation throughout!



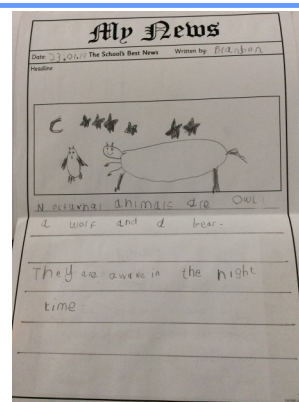
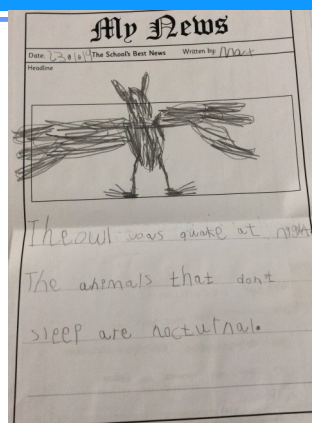
Irwell 2 have been busy this week doing lots of reading activities to do with our book "Dear Zoo". We also explored weddings in R.E. and enjoyed tasting the yummy wedding cakes!



Irwell 3 This week we have been super busy. We have been exploring our class story of the "Ginger Bread Man". We have been learning all about baking and even decorated our own biscuits. We enjoyed making them but our favourite part was tasting our final designs.



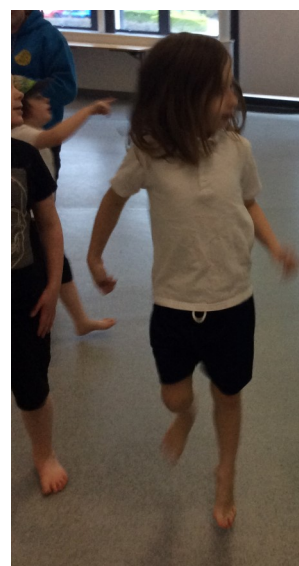
Irwell 4 This week we have been learning about nocturnal animals and writing a newspaper report on them. In DT we have been looking at our favourite stories, characters and TV programs to turn them into a shoe box theatre. Here is a picture of Brandon's and Max's newspaper report. Have a lovely weekend.



Irwell 5 During our English lessons this week in Irwell 5 we have listening to and explored all the props in our sensory story "The Rainbow Fish". We also made our very own Rainbow fish during sensory art and got VERY messy which was lots of fun!



Irwell 6 This week Irwell 6 have been learning about movement in P.E. We have used different steps and movements to improvise and also worked with a partner. Some of us joined in the "Carmen" rehearsals with Tim, Kate and Sarah. We were terrors and soldiers and showed off our excellent singing and signing.





Open to all Parent/Carers of young people (0-25) with SEND
(Special Educational Needs & Disabilities)

Coffee and Cake Drop-In



Tuesday 29th January 7.00-8.00pm

- **Coffee and Cake Drop-In** – Come and meet BURY2GETHER and other parent/carers of children/young people with SEND (Special Educational Needs and Disabilities).
- **IASS Drop-In** – Do you need SEND information, advice and support in relation to Education, Health and Social Care provision?
- **Transport Consultation** – The Transport Team has listened to our views and are now going to formally consult on Transport Provision, in preparation for designing the new Transport contracts.
- **Max Cards** – Come and pick up your Max Card. A FREE discount card for carers for all our members that have signed up through our website (Funded by Bury Council).

**BURY2GETHER Centre, Brandlesholme Community Centre,
Brandlesholme Road, Bury, (Sat Nav postcode BL8 1JU).**

Pick up your
free Max
Card

Young people
and siblings
welcome

Chat with
other families

Informal &
friendly
atmosphere

Facebook Page (Open to Parent/Carers and Professionals): www.facebook.com/BURY2GETHER

Facebook Support Group (Strictly Parents/Carers Only): www.facebook.com/groups/Bury2Gether

Twitter: www.twitter.com/BURY2GETHER

Email: BURY2GETHER@gmail.com - Website: BURY2GETHER.co.uk

Best wishes

Helen Chadwick

Headteacher

PROGRESS REPORT FROM BUILDING TEAM

PROGRESS REPORT FROM PROJECT MANAGER

Millwood School- Progress Report No2

1.0 Progress Report

1.1 Progress to Date

The project commenced on 7th January 2019 and is forecast to complete within a 26 week contract period.

Since the previous report (15/1/19), the contractor has undertaken the following activities:

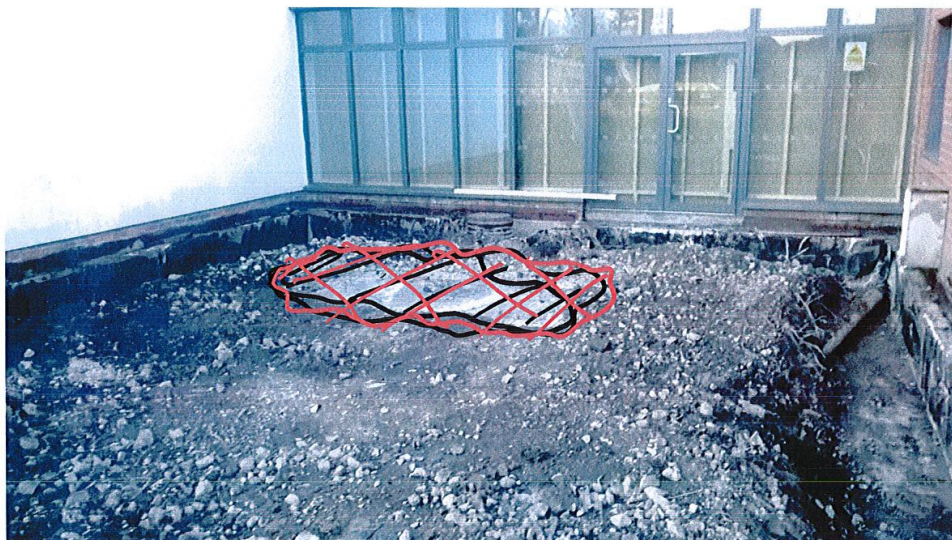
1. Further site setup of the contractor's facilities including pedestrian access gates and further construction pedestrian separation when on the site.
2. Submetering to electric and water services has been installed.
3. Further excavations and reduced level dig on the site
4. Further removal and retention of school equipment.

1.2 Progress against Programme

It is very early in the project, and to date the contractor is on programme with their construction activities.

In response to the exploratory site investigations, the contractor has decided to introduce steel and concrete piles to the foundation design solution.

2.0 Progress photos



Unforeseen reinforced concrete slab discovered below courtyard paving during excavations



Courtyard area with slab removed



Existing land drains discovered in area of new extension



Example of contractor CCTV camera system



View across construction site from Site Accommodation



Exposed existing foundations to canopy



Further reduced level dig for excavations to new extension classroom including spoil heap from removal



Infill classroom to courtyard area.

3.0 Project Issues

The intention of this section is to give high level information regarding issues encountered during the project.

1. The ground investigation results have informed the design that a different foundation solution will be required. A piled foundation system will now be used. This is scheduled to commence this week. There is potential for the piling to be noisy and school should be aware of the potential for this.
2. Additional CCTV coverage has been requested by the school to cover the rear fire exit. Security provider JB Eye are currently reviewing options of how to best undertake this work. Pick Everard are chasing for a solution.
3. Arrangement of construction works around the Assistant Headteacher's office and rear fire exit needs to be understood in more detail and will lead to further future discussions about solutions.
4. The existing below ground drainage is partially blocked and requires clearing. Bury MBC have instructed this work to be undertaken by HH Smith.
5. An existing unforeseen concrete slab was discovered under part of the courtyard. This has been broken out and removed.

4.0 Health & Safety

The Project has been notified under the CDM Regulations 2015 and Pick Everard act as Principle Designer on the project.

HH Smith have agreed to provide PPE equipment for a small number of school staff and children as this may be useful for social value activities, future site visits or school learning opportunities.

The removal of the concrete slab discovered in the infill classroom had the potential for noise disruption, but this was undertaken early in the morning before the school opened so as a consequence no disruption occurred.

5.0 Social Value

In the early stages of the project, the potential for integration between the project and social value matters is being discussed between the contractor and the school. A number of subjects are being discussed in the hope that several opportunities can be incorporated into the project. This includes ground breaking ceremony, school pupil presentation, artwork competitions etc. Joanne Hurst and Chris Purkiss (HH Smith) are in discussion regarding this area.

6.0 Environmental

1. Materials and equipment from the courtyard are being retained for reuse elsewhere in the school.
2. The contractors site compound has been laid out to retain existing trees and avoid any removal.
3. The proposed design will use the existing grey water collection system.

7.0 Works planned over next Four weeks

During the next four weeks, leading up to the mid-term spring holiday, the following activities are planned to both the infill and extension classrooms:

- Foundation excavations and laying
- Piled foundation installation
- Floor slab installation

The following designs will continue:

- Steel frame
- Architectural
- Mechanical & Electrical Services including heating, sprinklers, security systems etc.



Autism Research at the University of Bolton

Children with Autism Spectrum Conditions

between 6-12 years old are invited to take part with their parent

The study aims to understand natural mimicry and associated brain activity in children with autism in response to real facial expressions.

If your child has an Autism Spectrum Condition, is aged between 6-12 years old and engages in either (1) a social/group therapy, (2) a speech and language therapy or (3) no therapy at all:

**Please email PhD student Cassie on
cassieshort@hotmail.co.uk or
cas1ocd@bolton.ac.uk**

for more information.

Twinkleboost are now offering two Sensory Storytime sessions

Both sessions are on Tuesday afternoons at Brandleshome Community Centre, Brandelshome Rd, Bury, BL8 1HS to help children to improve their speech, language and communication development with fun, fairytales, signing, singing and sensory play.

Session 1 is 12.30-1pm and is for children aged 0-5 with general additional needs and delayed speech and language development.

Session 2 is 1.30pm - 2pm and is for children aged 0-5 with social communication difficulties and delayed speech and language development. Both of these classes are funded classes and therefore they are free and are run by Kirsty one of our lovely Speech and Language Therapy Assistants! If you would like to attend one of these classes please email or ring Victoria, tel: 07775755420, email victoria@twinkleboost.com or victoria@twinkleboost.com



[Home](#) » [Home to School Travel Assistance](#)

Home to School Travel Assistance



Home to School Travel Assistance

The Home to School transport service have been reviewing the current service options in preparation for a new contract specification which will be starting 1st September 2019. As part of this we would like to ask users of the service and other stakeholders to complete this survey to ensure your views are captured in service development where possible. The survey will be open until Sunday 3rd February 2019.

We will also be holding a drop-in session:

Coffee and cake drop in

Tuesday 29th January 7pm-8pm

Bury2gether Parents forum

Brandlesholme Community Centre

Brandlesholme Road